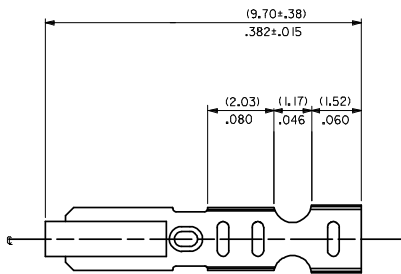
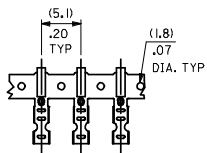
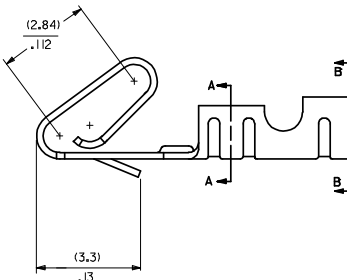
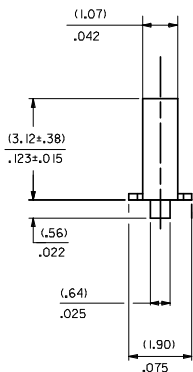
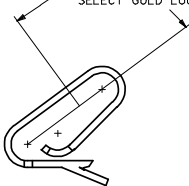


CARRIER VIEW

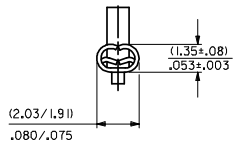


- NOTES
- MATERIAL
(0.203±0.010)/.0080±.0004 THICK BRASS
 - FINISH
102 - OVERALL TIN: (0.00508)/.000200 MIN. TIN OVER (0.00254)/.000100 MIN. COPPER
122 - OVERALL TIN: (0.00381)/.000150 MIN. TIN OVER (0.00076)/.000030 MIN. NICKEL
#P909 - OVERALL HOT TIN DIP: (0.00254)/.000100 MIN.
550 - SELECT GOLD (0.00038)/.000015 MIN. OVERALL GOLD FLASH: (0.00005)/.000002 MIN. OVERALL NICKEL UNDERPLATE: (0.00076)/.000030 MIN.
555- SELECT GOLD (0.00038)/.000015 MIN. OVERALL NICKEL UNDERPLATE: (0.00076)/.000030
558 - SELECT GOLD: (0.00076)/.000030 MIN. OVERALL GOLD FLASH: (0.00005)/.000002 MIN. OVERALL NICKEL UNDERPLATE: (0.00127)/.000050 MIN.
*THE PRIMARY SHIPPING CARTON WILL BE LABELED "COMPLIANT TO RoHS DIRECTIVE 2002/95/EC AND ELV ANNEX II OF DIRECTIVE 2000/53/EC." CARTONS WITHOUT THIS LABEL MAY CONTAIN PRODUCT WITH TIN-LEAD PLATING.
 - PRODUCT SPEC: PS-10-07
 - PACKAGING SPECIFICATION: NONE
 - CRIMP IS FOR 22-30 GA WIRE WITH (1.57)/.062 DIA INSULATION MAX.
 - INSERTION FORCE OF TERMINAL INTO (2.54)/.100 CENTERLINE CONNECTOR IS 2.5 LBS. MAX
 - TERMINALS WILL RETAIN 8 LBS PULL FOR 1 MIN. IN A (2.54)/.100 CENTERLINE HOUSING.
 - DIMENSIONS GIVEN ACROSS CENTERLINES ARE SYMMETRICAL ABOUT THOSE CENTERLINES WITHIN HALF THE TOTAL TOLERANCE.
 - CODE LETTER PRECEDING PART NO. DESIGNATES MANUFACTURING LOCATION.
I=IRELAND
 - THIS PART CONFORMS TO CLASS B REQUIREMENTS OF COSMETIC SPECIFICATION PS-45499-002.

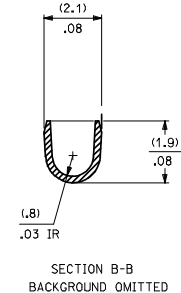
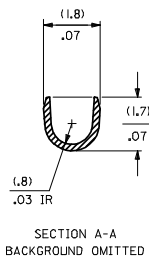
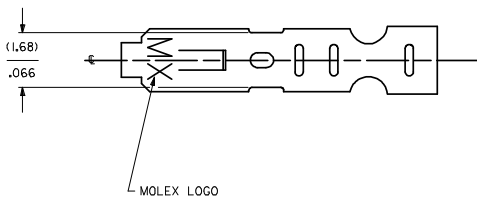
SELECT GOLD LOCATION



CRIMP DETAIL



CRIMPED TERMINAL 2759-(P90)LC IS USED WITHOUT WIRE AND IS INSERTED INTO HOUSING TO PROVIDE TENSION WHEN ASSEMBLED TO HEADERS DURING SHIPMENT.



- 2759-(***)*
- FORM
 - L=LOOSE
 - C=LOOSE CRIMPED
 - A=CHAIN PER ES-339-A
 - B=CHAIN PER ES-339-B
- PLATING
- SEE NOTE 2

SH	REV
1	AS3
2	AS4

UPDATE DIMS
 DEC NO: UCP/2008-2190
 2008/03/17
 DRW: DRW: NADERR
 2008/03/18
 CHK: KOL: SCHMIDT
 2008/03/18
 APPR: F: SMITH
 2008/03/24

QUALITY SYMBOLS	DESCRIPTION
∇=0	
▽=0	

GENERAL TOLERANCES (UNLESS SPECIFIED)	
mm	INCH
4 PLACES ± .010	± .0004
3 PLACES ± .010	± .0004
2 PLACES ± 0.25	± .010
1 PLACE ± 0.36	± .014
ANGULAR ± 1/2°	

DIMENSION STYLE		SCALE	DESIGN UNITS	THIRD ANGLE PROJECTION
MM/IN	DATE	---	INCH	☐
DRAWN BY	DATE	TITLE		
SAMIEC	07/28/87	CRIMP TERMINAL		
CHECKED BY	DATE	22-30 GA WIRE		
PATEL	07/28/87			
APPROVED BY	DATE			
LENZ	07/28/87			

MATERIAL NO.	DOCUMENT NO.	SHEET NO.
SEE CHART	SD-2759	1 OF 2

MOLEX INCORPORATED

THIS DRAWING CONTAINS INFORMATION THAT IS PROPRIETARY TO MOLEX INCORPORATED AND SHOULD NOT BE USED WITHOUT WRITTEN PERMISSION

2759-(***)*															
PART NO.	ENG. NO.	PART NO.	ENG. NO.	PART NO.	ENG. NO.	PART NO.	ENG. NO.	PART NO.	ENG. NO.	PART NO.	ENG. NO.	PART NO.	ENG. NO.	PART NO.	ENG. NO.
08-55-0101	2759-(555)B														
08-55-0102	2759-(555)L														
08-55-0126	2759-(555)A														
08-56-0109	2759-(550)B														
08-56-0110	2759-(550)L														
08-50-0113	2759-(P909)B														
08-50-0114	2759-(P909)L														
08-50-0124	2759-(P909)C														
08-51-0108	2759-(122)B														
	2759-(122)L														
I 08-50-0274	2759-(P909)B														
I 08-50-0275	2759-(P909)L														
I 08-50-0273	2759-(P909)A														
08-55-0130	2759-(558)B														
08-55-0131	2759-(558)L														
08-50-0160	2759-(102)L														
08-50-0159	2759-(102)														

REMOVE *999 PARTS EC NO: UCP2008-0722 DRAWN BY: 2007/08/02 CHKD: JRELL 2007/08/02 APPROVAL: JH 2007/08/03 AS4 REV DESCRIPTION	QUALITY SYMBOLS	GENERAL TOLERANCES (UNLESS SPECIFIED)	DIMENSION STYLE	SCALE	DESIGN UNITS	THIRD ANGLE PROJECTION												
	$\nabla=0$ $\nabla=0$	<table border="1"> <tr><th>mm</th><th>INCH</th></tr> <tr><td>4 PLACES ± --- ± ---</td><td></td></tr> <tr><td>3 PLACES ± --- ± ---</td><td></td></tr> <tr><td>2 PLACES ± --- ± ---</td><td></td></tr> <tr><td>1 PLACE ± --- ± ---</td><td></td></tr> <tr><td>ANGULAR ±1/2°</td><td></td></tr> </table>	mm	INCH	4 PLACES ± --- ± ---		3 PLACES ± --- ± ---		2 PLACES ± --- ± ---		1 PLACE ± --- ± ---		ANGULAR ±1/2°		MM/IN	---	INCH	
	mm	INCH																
	4 PLACES ± --- ± ---																	
3 PLACES ± --- ± ---																		
2 PLACES ± --- ± ---																		
1 PLACE ± --- ± ---																		
ANGULAR ±1/2°																		
		<table border="1"> <tr><td>DRAWN BY</td><td>DATE</td></tr> <tr><td>SAMIEC</td><td>07/28/87</td></tr> <tr><td>CHECKED BY</td><td>DATE</td></tr> <tr><td>PATEL</td><td>07/28/87</td></tr> <tr><td>APPROVED BY</td><td>DATE</td></tr> <tr><td>LENZ</td><td>07/28/87</td></tr> </table>	DRAWN BY	DATE	SAMIEC	07/28/87	CHECKED BY	DATE	PATEL	07/28/87	APPROVED BY	DATE	LENZ	07/28/87	TITLE	CRIMP TERMINAL 22-30 GA WIRE		
DRAWN BY	DATE																	
SAMIEC	07/28/87																	
CHECKED BY	DATE																	
PATEL	07/28/87																	
APPROVED BY	DATE																	
LENZ	07/28/87																	
		DRAFT WHERE APPLICABLE MUST REMAIN WITHIN DIMENSIONS	MATERIAL NO. SEE CHART	DOCUMENT NO. SD-2759	MOLEX INCORPORATED													
			SIZE D	THIS DRAWING CONTAINS INFORMATION THAT IS PROPRIETARY TO MOLEX INCORPORATED AND SHOULD NOT BE USED WITHOUT WRITTEN PERMISSION														